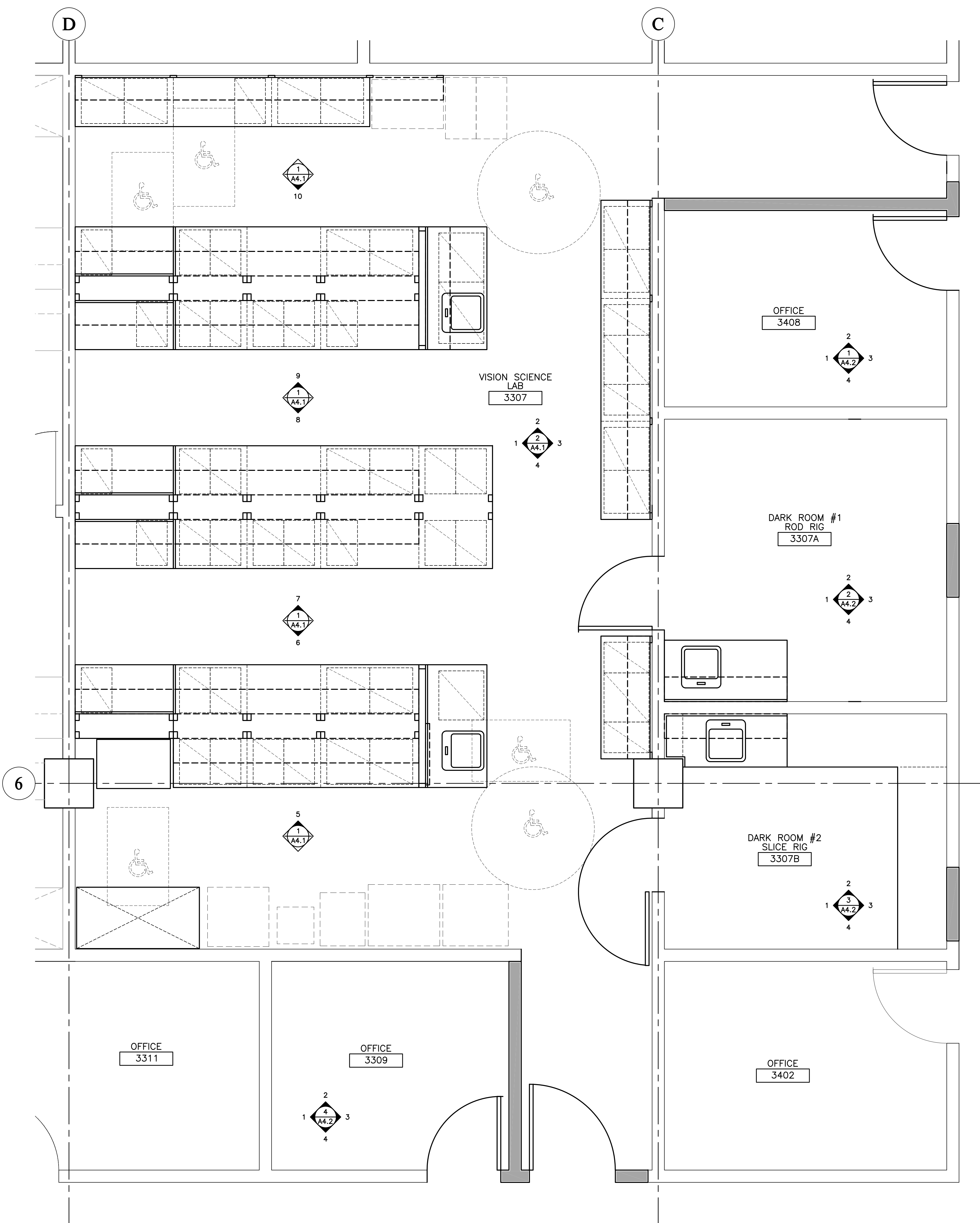


ONE INCH = TWENTY FEET
 ONE-SIXTEENTH INCH = ONE FOOT
 ONE-EIGHTH INCH = ONE FOOT
 ONE-FOURTH INCH = ONE FOOT
 ONE-HALF INCH = ONE FOOT
 THREE-QUARTERS INCH = ONE FOOT
 ONE INCH = ONE FOOT
 ONE INCH = ONE FOOT
 ONE & ONE-HALF INCH = ONE FOOT



1 CASEWORK LAYOUT ROOMS:
 3307, 3408, 3307A, 3307B, 3309
 1/2" = 1'-0"



GENERAL SHEET NOTES:

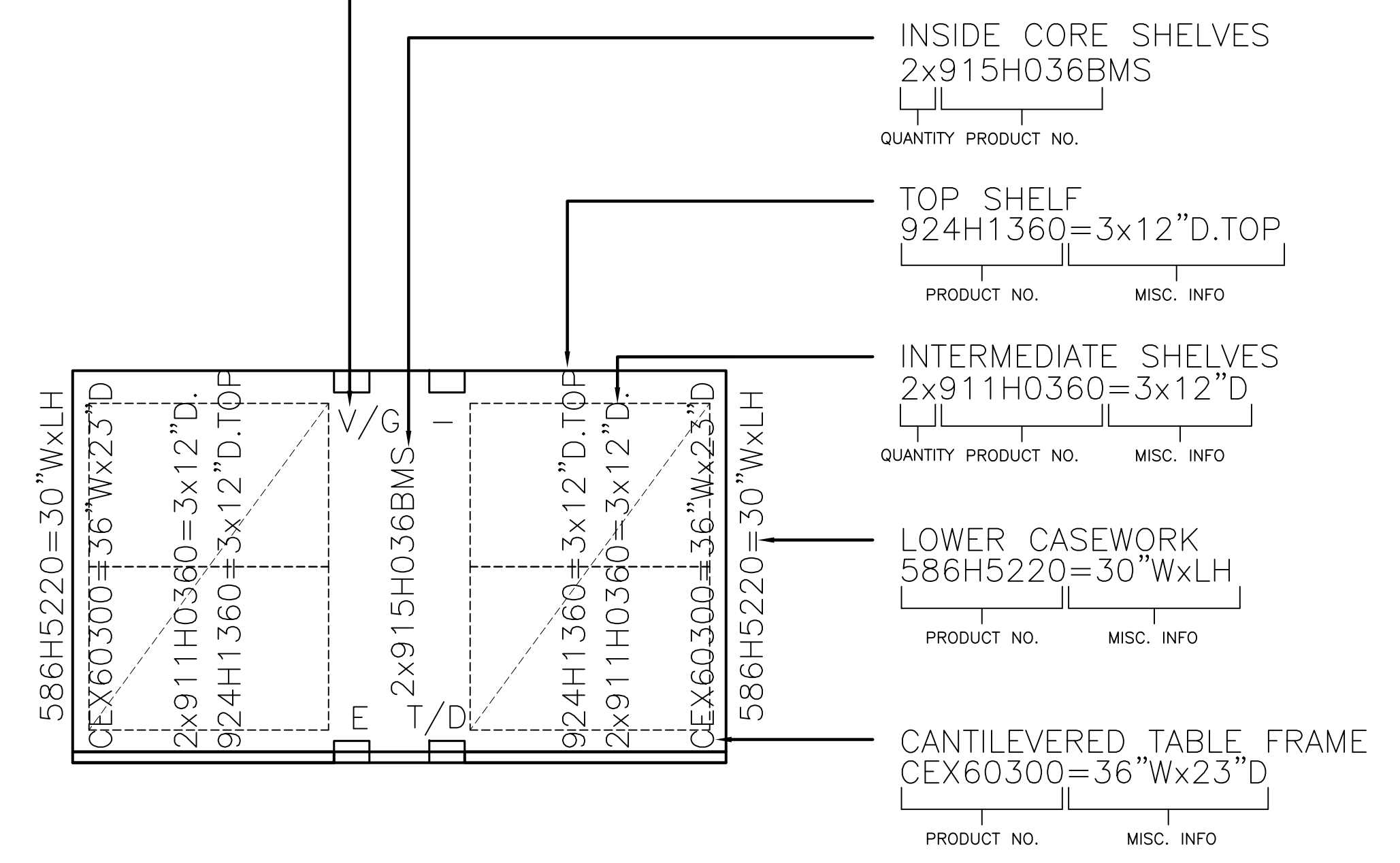
1. PRODUCT NUMBERS SHOWN ARE TAKEN FROM THE FISHER HAMILTON "MAX/LAB" LABORATORY FURNITURE PRODUCT LINE. PROVIDE EQUAL PRODUCTS IF ALTERNATE MANUFACTURER IS USED:
 - A. KEWAUNEE SCIENTIFIC CORPORATION
 - B. JAMESTOWN METAL PRODUCTS - "FLEX CORE"
 - C. Or Equal.

LEGEND:



VERTICAL SERVICE PEDISTALS AT EACH CORE SUPPORT, EACH SIDE, EACH MODULE. PROVIDE SERVICE PEDISTALS WITH CHANNELS TO SUPPORT THE DESIGNATED SERVICES AS INDICATED. SEE PLUMBING AND ELECTRICAL DRAWINGS FOR ADDITIONAL INFORMATION REGARDING THE EXACT TYPE OF SERVICE THAT OCCURS AT EACH SPECIFIC LOCATION.

A/G = AIR & GAS SERVICES CHANNEL AS IN #950H011B
 A/V = AIR & VACUUM SERVICES CHANNEL AS IN #950H011B
 E = ELECTRICAL SERVICE CHANNEL AS IN #950H011A
 T/D = TELEPHONE AND/OR DATA SERVICE IN #950H011C
 - = BLANK CHANNEL AS IN #950H011A



CASEWORK KEY
 NO SCALE

UC DAVIS
DESIGN AND CONSTRUCTION MANAGEMENT
 255 COUSTEAU PLACE
 DAVIS, CA 95618
 530 754-1111

APPROVALS:
 UCD DESIGN and CONSTRUCTION MANAGEMENT DESIGN REVIEW COMMITTEE CERTIFICATION
 THESE PROJECT DOCUMENTS HAVE COMPLETED THE PLAN CHECK PROCESS.

CHAIRPERSON, DESIGN REVIEW COMMITTEE DATE _____
 DESIGN and CONSTRUCTION MANAGEMENT DATE _____

CALIFORNIA STATE FIRE MARSHAL
 APPROVED
 Approval of this plan does not authorize or approve any omission or deviation from applicable regulations. Final approval is subject to field inspection. One set of approved plans shall be available on the project site at all times.
 Reviewed by: _____

DIVISION OF THE STATE ARCHITECT
 FILE NO. 07-UCD
 IDENTIFICATION STAMP
 DIV. OF THE STATE ARCHITECT
 OFFICE OF REGULATION SERVICES
 APPLICATION NO.
 02-000000
 AC _____ FLS _____ SS _____
 DATE _____ Month _____ Day _____ Year _____

UCD ARCHITECTURAL CONSULTANT

nacht & lewis
 ARCHITECTS
 600 Q Street
 Suite 100
 Sacramento, Ca, 95811
 (916) 329-4000
 www.nlarch.com

NLA Project No.
 Y1013.00
 CONSULTANT TO NACHT & LEWIS ARCHITECTS

UNIVERSITY OF CALIFORNIA, DAVIS
 TUPPER HALL
 3rd FLOOR
 VISION SCIENCES LABORATORY
 REMODEL
 UCD PROJECT NO: 951890
 DESIGN DEVELOPMENT PHASE
 95% DD SUBMITTAL
 February 23, 2011

SHEET ISSUANCE		
NO.	DATE	DESCRIPTION
1		
2		
3		
4		
5		

SHEET REVISIONS		
MARK	DATE	DESCRIPTION
1		
2		
3		
4		
5		

SHEET TITLE
NEW WORK
 3rd FLOOR
 CASEWORK PLAN

SHEET NUMBER
A4.0